



MONTHLY MEMBERSHIP PROGRESS REPORT

District 105 A

Results as of: 03/31/2018

GMT: JOOST PAIJMANS

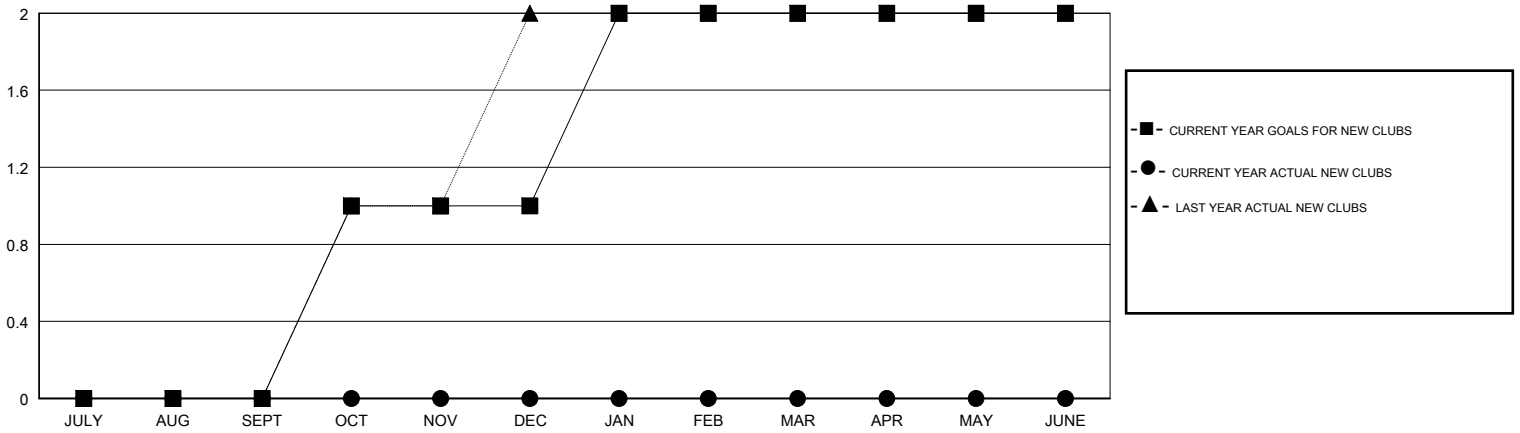
LOCATION ENGLAND

GMT CA

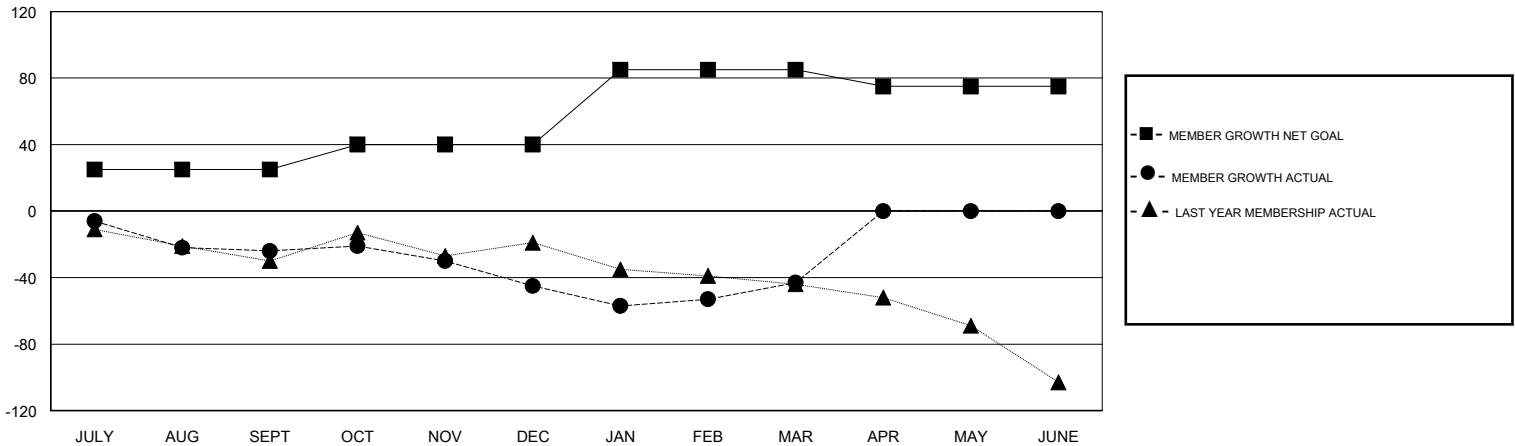
Clubs			
RESULTS FOR 2017-2018			
QUARTER	NEW CLUB GOAL	NEW CLUBS	DROPPED CLUBS
JULY/AUG/SEPT	0	0	1
OCT/NOV/DEC	1	0	1
JAN/FEB/MAR	1	0	1
APR/MAY/JUNE	0	0	0

Members			
RESULTS FOR 2017-2018			
QUARTER	MEMBER GROWTH NET GOAL	MEMBER GROWTH ACTUAL	DROPPED MEMBERS ACTUAL (including transfers)
JULY/AUG/SEPT	25	25	48
OCT/NOV/DEC	15	22	40
JAN/FEB/MAR	45	41	35
APR/MAY/JUNE	-10	0	0

GOALS AND ACTUAL NEW CLUBS CUMULATIVE



GOALS AND ACTUAL MEMBERS CUMULATIVE



DROPPED CLUBS: 3	37 CLUBS OF 71 ADDED 1 OR MORE NEW MEMBERS	<u>GENDER DISTRIBUTION</u>	
DROPPED MEMBERS		MALE	1,026 (74.29%)
DECEASED	11	FEMALE	355 (25.71%)
CLUB CANCELLED	7	Women Percentage Fiscal Year Goal: 25%	
OTHER	105	TOTAL FAMILY UNIT MEMBERS	101
TOTAL	123	FAMILY MEMBERS PAYING HALF DUES	51

[CLICK HERE FOR CUMULATIVE MEMBERSHIP DATA](#)